

# Models HI 1756-WS HI 1756-2WS

## Weigh Scale Module

### Applications

#### PROCESS WEIGHING

- Batching/Blending
- Filling/Dispensing
- Level-by-Weight
- Check Weighing



**HI 1756-WS**  
Single Scale

**HI 1756-2WS**  
Dual Scale



### Features

#### THE HARDY PROCESS TOOLBOX

The Hardy Process Toolbox is a set of productivity tools that support process weighing functions. Each tool saves time, increases accuracy, improves efficiency or reduces risk in process weighing applications.



**C2® and eCAL™**  
Electronic Calibration  
Electronic calibration without test weights



**WAVERSAVER®**  
Ignores vibration on and around scales

**INTEGRATED TECHNICIAN®**  
Weighing system monitoring and troubleshooting



To learn more about the HI 1756-WS/ HI 1756-2WS visit our web site for:

- full product specifications
- ordering information
- application notes
- operator's manual

[www.hardysolutions.com](http://www.hardysolutions.com)

Hardy's HI 1756-WS is available as a single slot, single or dual scale, weigh scale module that mounts in an Allen-Bradley® ControlLogix® Chassis. It reads weight and diagnostic data from strain gauge load sensors or load cells and communicates this data over the I/O chassis Backplane to the ControlLogix Processor. The HI 1756-WS module reduces installation cost and increases speed since no external stand-alone scale instrument with a wired communications link to the PLC is needed.

The HI 1756-WS conditions and digitizes the weight signal 110 times per second with over one million counts of resolution over a differential signal range of 0 to 15mV. It then transmits the selectable Gross, Net and/or Rate-of-Change data to the processor. This high resolution allows the module to tolerate large dead loads and over sizing of the load sensors while retaining a high level of usable resolution. The module supplies 5 volts of DC excitation to drive up to four 350 ohm load sensors or load cells associated with a single (-WS), or eight load cells associated with a dual (-2WS) scale. It will support additional load cells with an external power supply.

The HI 1756-WS supports the use of the producer/consumer technology in the ControlLogix system to transmit data. This type of communications is an intelligent data exchange in the system where the module produces data without having to be polled.

### FEATURES

Two or three bi-color LEDs on the module's front panel report functional characteristics. Being a true ControlLogix module the HI 1756-WS supports removal and insertion under power.

#### C2® ELECTRONIC CALIBRATION

C2 enables electronic calibration of the weigh system without test weights. This saves system start-up costs and aggravation. Of course, even if C2 certified load sensors are not used, the system can still be calibrated the slow, traditional way using certified test weights.

#### WAVERSAVER®

WAVERSAVER eliminates the effects of unwanted plant vibration on or around the scale by permitting the weigh module to "see" through the unwanted vibration signals - as low as 0.25Hz - while yielding a stable actual reading.

#### INTEGRATED TECHNICIAN®

INTEGRATED TECHNICIAN, used in conjunction with an IT Junction Box, provides built-in system diagnostics that enable you to troubleshoot and diagnose your weighing system. You can read individual load sensor voltages and weights, make comparisons, and isolate individual system components for quick and easy troubleshooting.

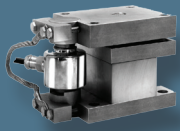
#### THE BUTTON®

With one push of a button the weigh scale module automatically calibrates the C2 certified weighing system, making it ready for use. This saves system start-up time costs and aggravations.

# COMPONENTS TO COMPLETE YOUR HARDY SYSTEM

## Hardy Bench Scales, Floor Scales and Load Points

Hardy carries a wide variety of strain gauge load points and scale bases to accommodate your application requirements.



ADVANTAGE Series Load Point with C2 Calibration



Hardy Bench Scales

## Weighing Instruments Dedicated to Your Applications

Controllers, Weigh Modules, Weight processors

Allen-Bradley® Compatible Plug-in Weigh Scale Modules



HI 3000 Series HI 4050 Controllers and HI 6000 Series



## SPECIFICATIONS

### Power

- Provided from the backplane of the rack: +5Vdc, +24Vdc

### Backplane Current

- < 1 Amp @ 5Vdc 5W
- < 0.0125 Amp 0.3 @ 24Vdc with 4 350 ohm L

### Inputs

- Signal: -0.3mV through +15.3 mVdc
- Sense: +5Vdc
- C2® Electronic Calibration

### Outputs

- Excitation 5Vdc to 8.75Vdc

### Common Mode Rejection

- 100dB at or below 60 Hz (minimum)

### Resolution

- Internal, 1:8,388,608

### Conversion Rate

- 110 updates per second

### Vibration Frequency Rejection

- 0.25 Hz and above in 5 selectable steps
- WAVERSAVER®

### Weight

- 1.1 lb (0.5 kg)

### Environmental Conditions

- Operating Temperature: 0 to 60°C (32 to 140°F)
- Storage Temperature: -40 to 85°C (-40 to 185°F)

### Relative Humidity

- 5 to 95% (non-condensing)

### Weighing Modes

- Net, Gross, Rate-of-Change

### Calibration

- Electronic (C2)
- Traditional (test weights)

### Averages

- 1-255 user selectable in single increments

### Indicators

- "OK" Module Status, tri-color LED
- "Scale 1" Functional Data, tri-color LED
- "Scale 2" Functional Data, tri-color LED

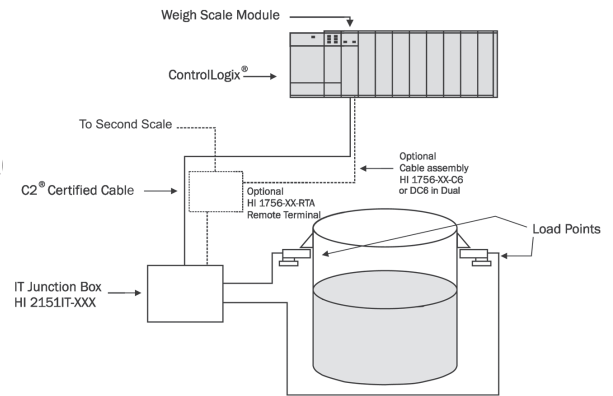
### Approvals

- UL, CUL, CE

### Warranty

- Two-year warranty against defects in workmanship

## TYPICAL CONFIGURATION



## OPTIONS

### • Remote Termination Assembly (-RTA)

The weigh scale module optional Remote Termination Assembly provides connection points between the cable assembly to the module and individual wires from the junction box, or load sensors, of up to two scales. The RTA is designed for standard DIN mounting rails or standoffs. With an HI 1756-RTA configuration, the weigh scale modules can be replaced without disturbing the wiring.

### • Cable (-C6 -DC6)

Hardy provides an optional 6-foot (1.8m) cable assembly from the weigh scale module to the remote termination assembly for both single and dual configuration.

HI 1756-WS-RTA-C6	Single weigh scale module with remote termination assembly and cable
HI 1756-2WS-RTA-DC6	Dual weigh scale module with remote termination assembly and cable
HI 1756-WS	Single weigh scale module alone
HI 1756-2WS	Dual weigh scale module alone
HI 1756-XX-RTA	Remote termination panel alone; supports two single-scale and one dual-scale module
HI 1756-XX-C6	Single-scale 6-foot (1.8m) cable from RTA to a single module
HI 1756-XX-DC6	Dual-scale 6-foot (1.8m) cable from RTA to 2 single modules or one dual module



## Hardy Process Solutions

9440 Carroll Park Dr.  
San Diego, CA 92121  
tel. +1-858-278-2900  
tel. 800-821-5831  
fax +1-858-278-6700  
www.hardysolutions.com  
hardyinfo@hardysolutions.com

ISO 9001:2008  
CERTIFIED

Since 1993

All information is subject to change without notice. Visit our website for latest specifications. WAVERSAVER, C2, IT, ADVANTAGE and ANY-WEIGH are registered trademarks of Hardy Process Solutions. Allen-Bradley, CompactLogix, MicroLogix and Encompass are trademarks of Rockwell Automation, Inc. All other trademarks or registered trademarks are the property of their respective owners.

HI 1756-WS 0215  
0400-0009-01D